

# iRecord



# MULTIVERSE

## RECORD MORE—WITH THE iRECORD MULTIVERSE SERVER

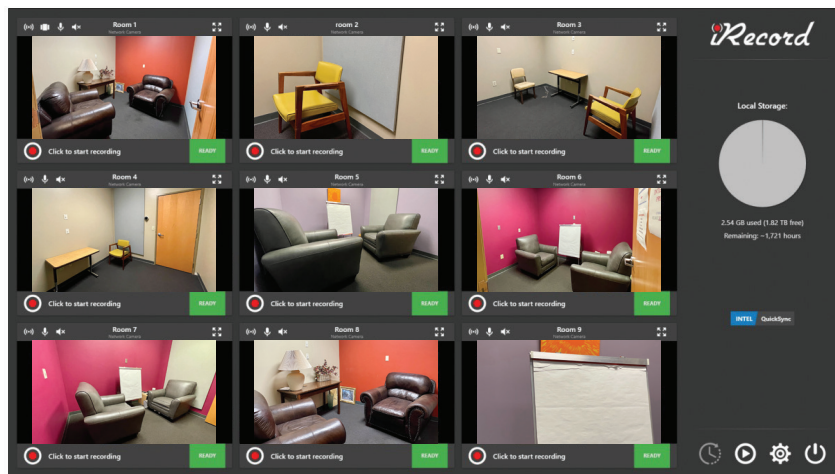
### SERVER-GRADE CAPTURE SYSTEM

Designed specifically for the public safety sector, **iRecord** Multiverse is the **scalable and cost-effective solution** to record more interviews and analyze critical evidence faster. The server platform also gives agencies **multiple backup options** to keep all of their interview recordings and additional digital evidence secure with reliable and compliant technology.

- Compact 1U Rack Server
- Intel Xeon Silver 16 Core Processor
- 16GB Error Correction Code RAM
- RAID 1 Data Storage
- Dual M.2 Drives for OS and Video Processing
- 8TB Storage Capacity
- Redundant 800W Power Supply
- Dual NIC Built In

### SCALABLE TO 9 ROOMS AND 18 CAMERAS

Located in a server room for a more reliable environment, **iRecord** Multiverse has a small hardware footprint **that fits right inside your server rack**. Agencies no longer need a designated workspace to review interview evidence, and they gain support for **up to 18 high-definition interview room cameras**—all recording with a single solution!



## THE POWER OF iRECORD MULTIVERSE

---

As a centralized database, the **virtual server capacities** of **iRecord** Multiverse are perfect for large facilities and public safety agencies spread across multiple site locations.

### MINIMIZE RISK

*advanced options for recording backups*

Interview evidence recorded with Multiverse is automatically exported to network storage. Users even have the ability to **sync their system** with a cloud storage solution and/or create an SD Card Edge Backup during recording **as another form of redundancy**.

### PROTECT THE BUDGET

*no need for multiple storage systems*

**iRecord** Multiverse allows for **unlimited simultaneous users** and delivers enterprise-level hosting. Facilities throughout your jurisdiction can utilize **the same Multiverse platform** via agency VLAN connections.

### INCREASE EFFICIENCY

*what used to take hours—now down to seconds*

Agencies operating with Multiverse **are able to integrate** with the full range of **iRecord's** partner products. **Streamline your workflow** and start analyzing your digital evidence with machine learning, data mining, artificial intelligence, facial recognition, and more.

## ALL-IN-ONE, TURNKEY TECHNOLOGY

---

**iRecord** is the premier end-to-end solutions provider for **audio video recording** and **digital content management** across the United States, Canada, and beyond.



sales@beiinc.com • 1.800.444.7372 • www.beiinc.com  
Contact us today for more information or to arrange a demonstration